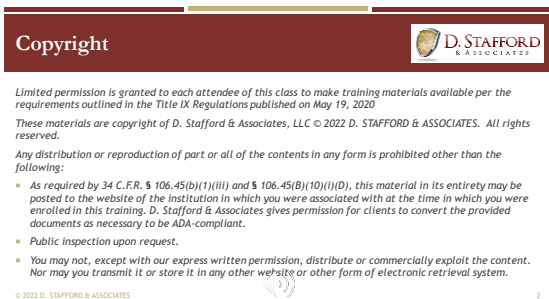




1



2



3

Sexual Assault

© 2022 D. STAFFORD & ASSOCIATES

4

What offenses are charged?

Rape vs. Fondling

Rape vs. Statutory Rape

Counterclaims

© 2022 D. STAFFORD & ASSOCIATES

5

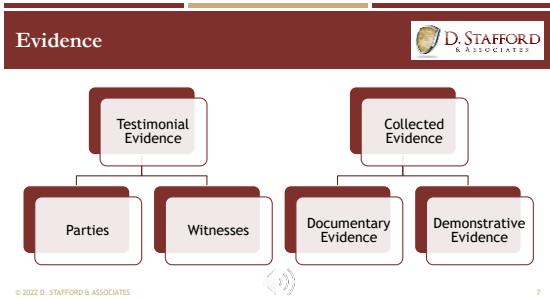
Goal 1

Compilation of Evidence

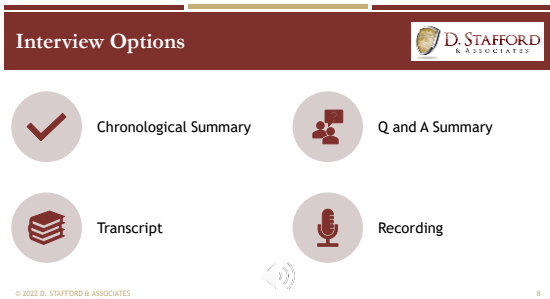
- “Directly related” (Title IX)

© 2022 D. STAFFORD & ASSOCIATES

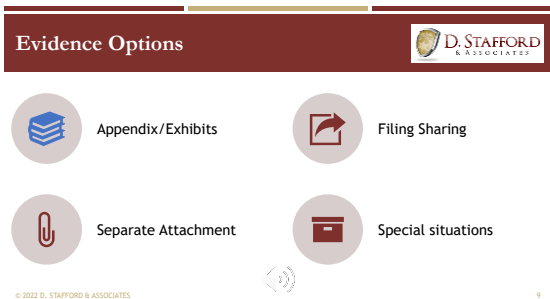
6




7

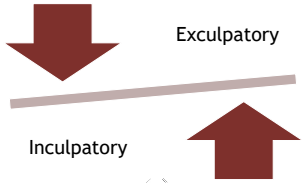


8



9

Evidence 

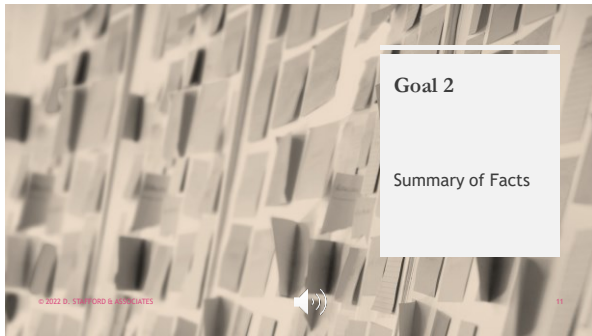


Exculpatory

Inculpatory

© 2022 D. STAFFORD & ASSOCIATES

10




Goal 2

Summary of Facts

© 2022 D. STAFFORD & ASSOCIATES

11

Summary of Facts 



Narrative form

Facts in agreement/
facts in dispute

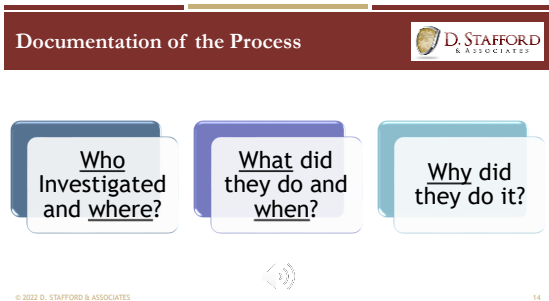
Bulleted list

© 2022 D. STAFFORD & ASSOCIATES

12




13




14




15


Other possible sections 



Timeline of Incident



Diagrams



Timeline of Notice

© 2022 D. STAFFORD & ASSOCIATES

16



17

THE ELEMENTS

© 2022 D. STAFFORD & ASSOCIATES

17

Elements of a Sexual Assault 

Sex Act

Without Consent

© 2022 D. STAFFORD & ASSOCIATES

18

Elements – Rape



The penetration, no matter how slight, of the vagina or anus with any body part or object, or oral penetration by a sex organ of another person, without the consent of the victim.

Sex Act
• Penetration

Without Consent
• Did not or
• Could not and
• Knowledge

© 2022 D. STAFFORD & ASSOCIATES

19

19

Elements – Fondling



The touching of the private body parts of another person for the purpose of sexual gratification, without the consent of the victim.

Sex Act
• Intentional Touching
• Private Body Parts

Without Consent
• Did not or
• Could not and
• Knowledge

© 2022 D. STAFFORD & ASSOCIATES

20

20

Alcohol and Incapacitation



- Type
- Amount
- Timeframe
- Person
- Other influencers

© 2022 D. STAFFORD & ASSOCIATES

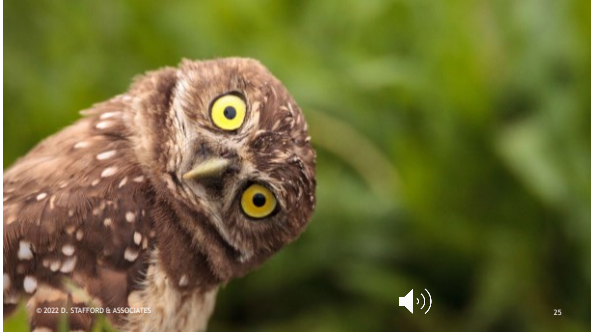
21

21

22

23

24



25



For additional information about training or other services we provide, please visit www.dstaffordandassociates.com

© 2022 D. STAFFORD & ASSOCIATES



26

26
